



## North America

Office: 18100 Von Karman Ave. Suite 850 Irvine, CA 92612 U.S.A

Tel: +1 ( 949 ) 7054598

Fax: +1 ( 949 ) 7054597

E-mail: [sales@buildinghitech.com](mailto:sales@buildinghitech.com)

## Asia Pacific

Headquarters: Suite 1203, No.339, Software Park, Chengyi Street, Jimei District, Xiamen

Factory: A2, Xiagong Machinery Park, No. 585, Tieshan Road, Jimei District, Xiamen

Tel: +86-592-3602309

Mob: +86-13559200628

E-mail: [sales@dahezb.com](mailto:sales@dahezb.com)

[www.buildinghitech.com](http://www.buildinghitech.com)  
[www.dahezbforming.com](http://www.dahezbforming.com)

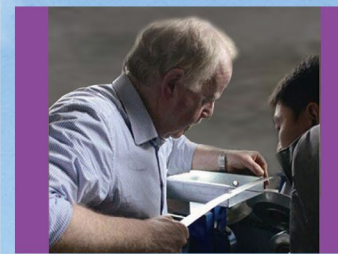
**Hi-TECH**  
BUILDING SOLUTION



Design Software Equipment Material

# Prettify prefabricated building by intelligent technology

Focus on CZ, persist in flexible production technology



**CFS**  
*construction solutions*





# COMPANY PROFILE

Stock Code : 871073



HI-TECH BUILDING SOLUTION, Inc., located in Irvine, California, is a wholly-owned subsidiary of DAHEZHONGBANG (XIAMEN) INTELLIGENT TECHNOLOGY CO.,LTD., Hi-tech building' s manufacturing base is in Xiamen city, China where has with a well-established industrial base, also with the well-qualified technicians, experienced workers and strict QC inspection, Hi-tech can provide with a very cost-effective steel frame solution to the market.

DAHEZHONGBANG (XIAMEN) INTELLIGENT TECHNOLOGY CO., LTD is a high technology developing company that specially developing 3D building modeling software, CAM controlling system, and Smart equipment. In addition, we invest resources and capital in researching standard building system, aiming of providing a complete range of building solutions to customers, who are involved into prefabricated building area.

HI-TECH can provide the most cost-effective building solutions to world-wide customers based upon parent company' s fully support, our local tailored services will satisfy all kinds of customers' needs.



## LEADER' S MESSAGE

As we may know,The temperature of the sun' s surface is about 5500°C. It is so high that everything surrounded exists in gas state.However,too much dispersal of sunlight will cause the energy decrease thousand times when radiated from the sun,and thus we can take direct exposure to the sunlight,nevertheless,a little concave-convex lens can re-together the whole energy.

The whole thing is just like our universe,too many people are focusing on doing so-called big things and only few concentrating on the refinement of quality.Innovation in the whole is zigzag,let alone innovation in a viven one aspect.Thanks very much to our clients' support and encouragement.With your support,we are steadily devoting ourselves to a single-minded,specific and professional innovation.We believe that single mind makes concentration,concentration leads to profession only profession can we put skill into use primely.

CEO: Kevin



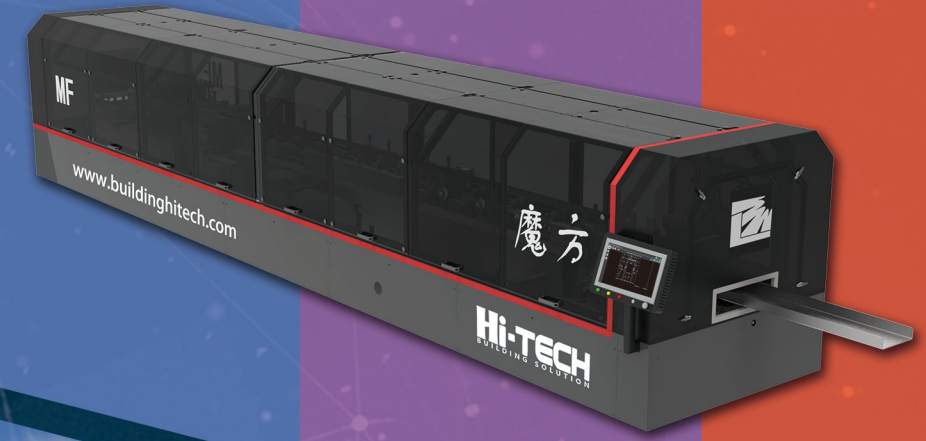


FOCUS ON CZ, DEAL WITH YOUR EVER-CHANGING

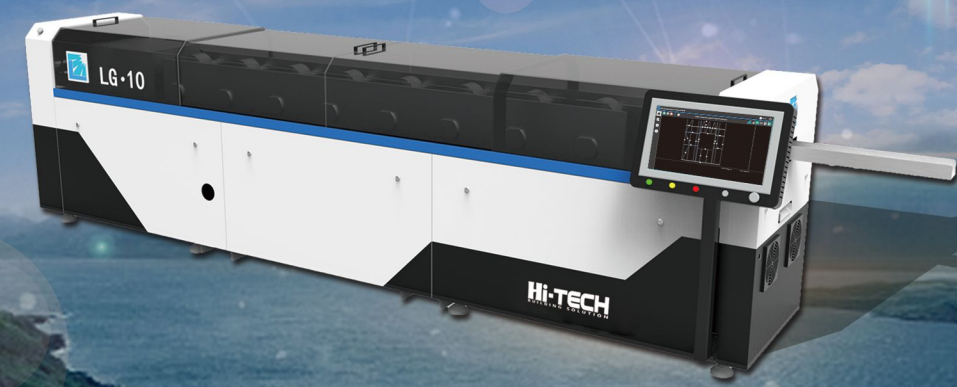
Equipment preview

MF

Super CZ



Intelligent CZ



Adjustable CZ





Super CZ



Companion of traditional steel structure, worry-free for high-building.

The world is changing except our service.

Integrated with walls, floors, stairs, trim pane, ceiling.

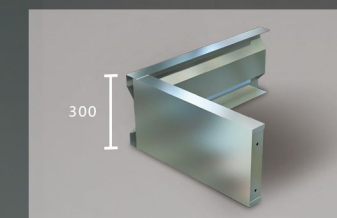
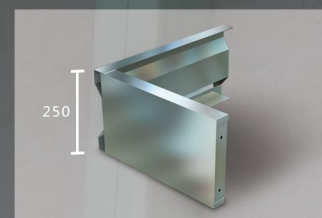
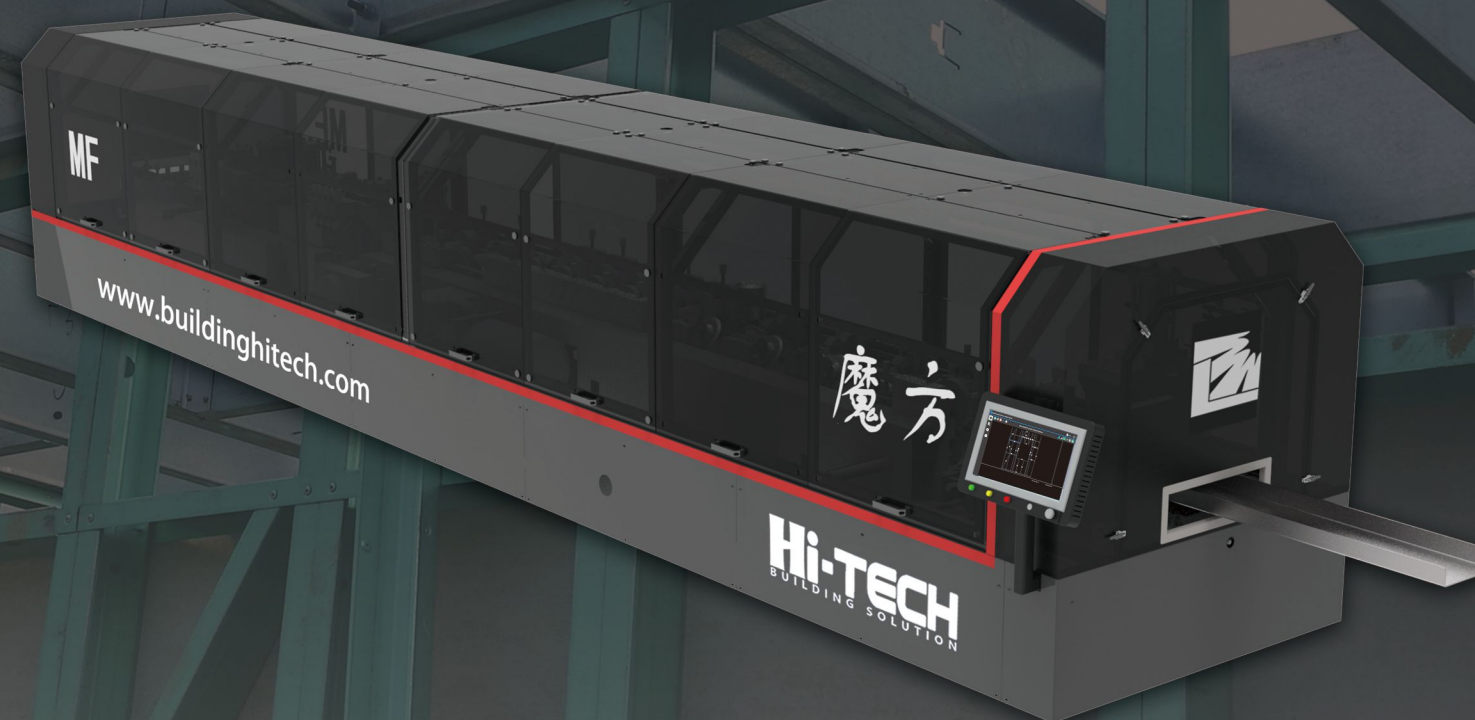
MF-200



MF-300



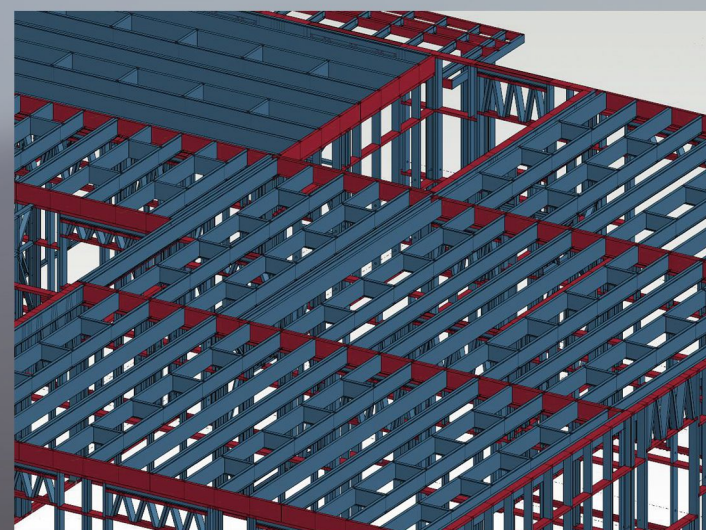
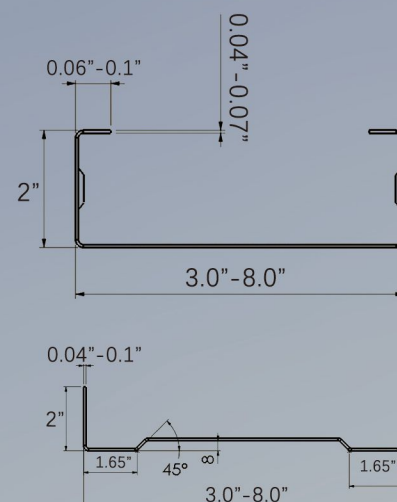
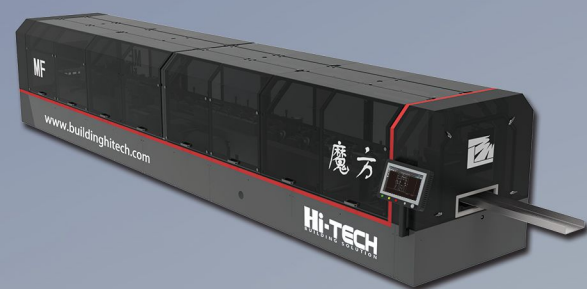
MF-300T





## Multi Purpose-MF200

### Wall Stud & Track / Floor Joist & Track

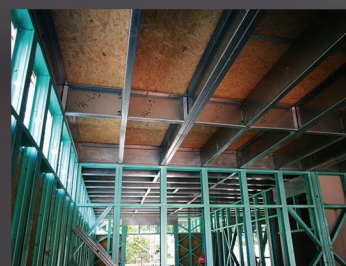


#### Intelligent steel framing equipment for

- Bearing exterior wall for commercial building and warehouse
- Heavy-duty walls panel
- Heavy residential buildings
- Floor joist system

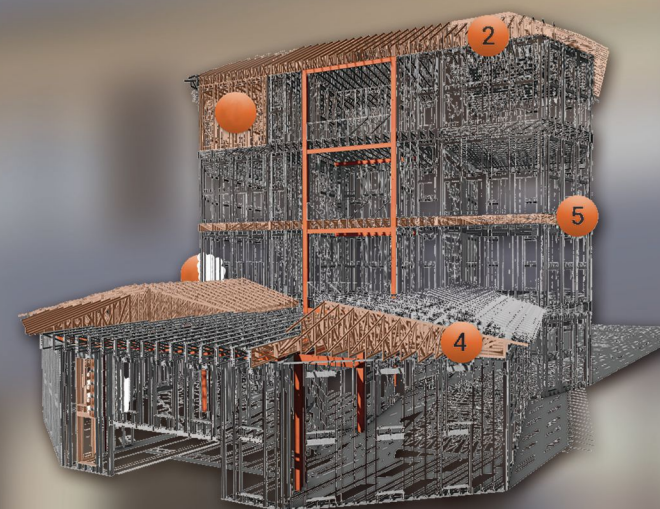
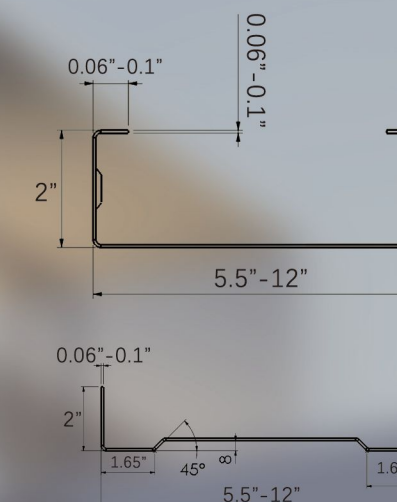
#### Features of MF200

- Produce multi profile for floor joist from 3.0" to 8"
- Well integrated will design software like Building Master, Vertex BD, MWF Pro Metal, Truss D&E.
- Outputs are incorporated America standard building code.
- Multi punch tools for utilities, web notch, flange notch, Tap on web and services hole.
- Installed online inject printer, which allows marks to be print on flange



## Multi Purpose-MF300

### Heavy Wall Stud & Track / Heavy Floor Joist & Track



#### Upgraded framing system for

- Large scale floor joist project
- Large scale bearing wall structures, like header, post and column
- Large scale back to back roof truss
- High-rise commercial building for hotel, shopping center, restaurant etc.

#### Features of MF300

- Produce multi profile for floor joist from 5.5" to 12"
- Available in all common floor joist depths, streamlines the design and construction process.
- Less wastes, allow to save your costs of steel structure up to 10%.
- Special design of Hi-tech' s floor joist system, enhance the strength of holes for utilities.



Intelligent CZ



LG III Unique technology    Intelligent LSF machine

Multi encoder to calculate  
Ensure your efficient production

Material width adjustment roller  
Less material wastes

Strengthening system  
Adapt to multiple sheet materials

Wireless remote control  
Achieve Flexible production and rapid service

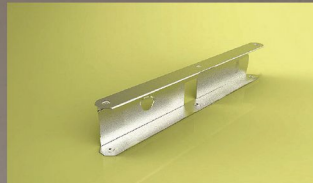
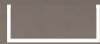
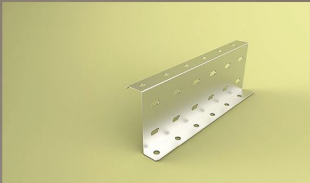
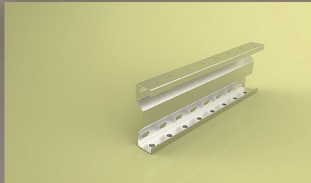
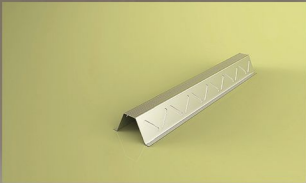
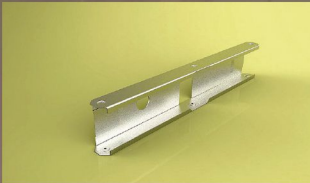
Dynamic display forming processing  
Flexible, dynamic and diverse

Collision Avoidance System  
Reduce production accidents

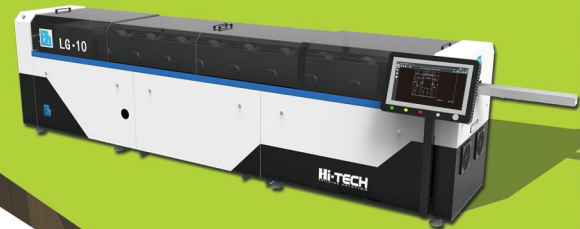
Quick clip, anti-collision tool  
Reduce sheet blocking

All accessories are popular brands  
Bearings (NTN), Hydraulic accessories( made in Germany),  
oil pipes(Interhydraulik from Germany)

Choose Dahezb, Choose international standard.



LG-10



LG-140



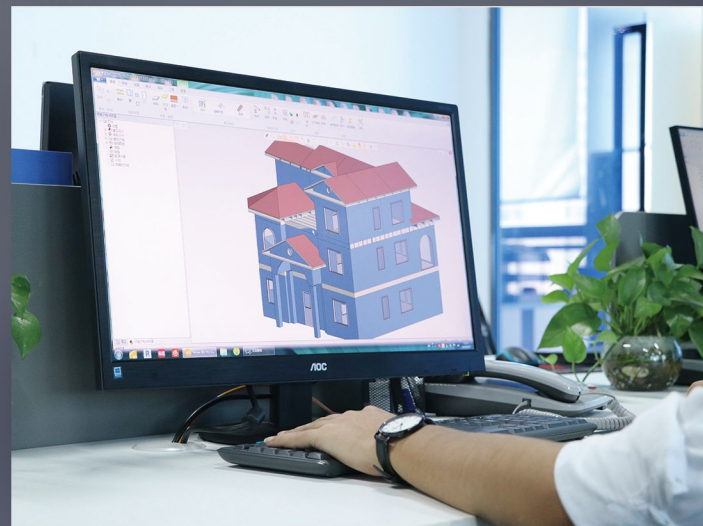
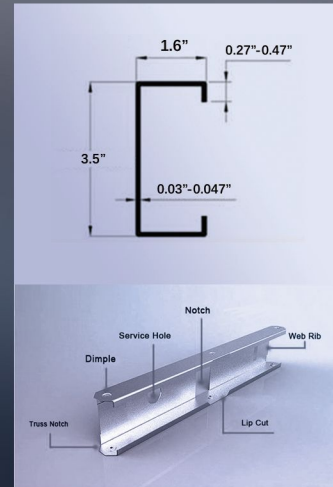
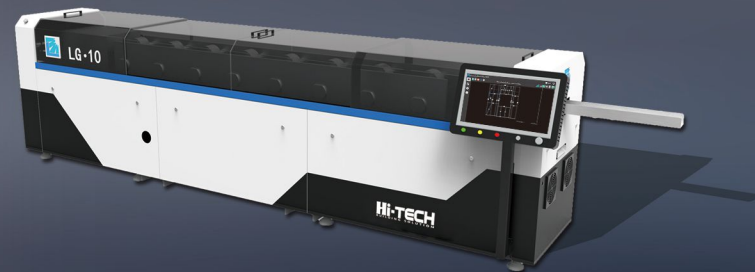
LG-10T





# LG-10

## Residential housing (1-3 level) manufacturing equipment



### Innovation framing system for

- Commercial building
- Low Rise house Levels (1-3)
- Wall panel framing
- Roof trusses framing
- Floor truss

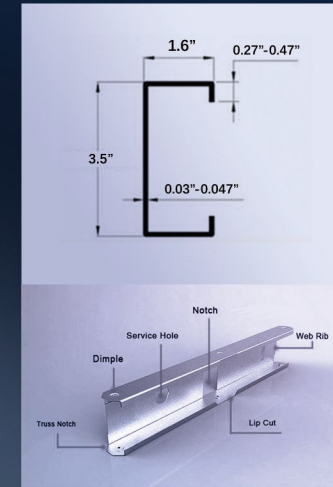
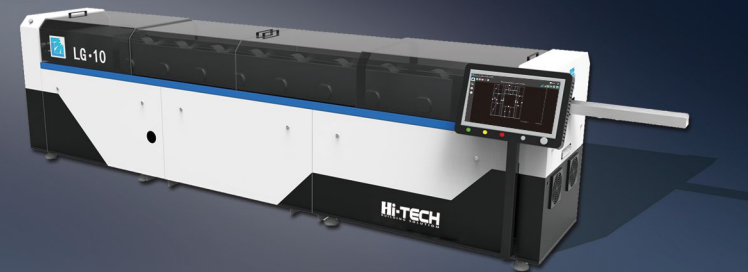
### Features of LG-10

- Roll forming speed: 4 Ton/ 8 hours.
- Maximum : 35 meters/ min Without punching.
- Appreance: All chain are inside of frame. Machine covered with safety guard.
- Well intergrated with variety design software: Building Master, Vertex BD, Argos or MWF Pro Metal
- C profile : Use one profile 3-1/2 inch to build 2-3 level house.
- Online injet printer: Print marks on flanges.
- Motor: Omron Servo motor, faster and more stable



# LG-140

## Intelligent Stud & Track manufacturing equipment



### Upgraded framing system for

- Bearing structure
- Walls framed for low and high rise buildings (1-5levels)
- Storage, recreational, transportable dwellings

### Features of LG-140

- Produce two profiles on one machine, 5-1/2 inch for wall stud and track.
- Enhance the frame structure of LG10T, which makes forming speed faster and more stable.
- Installed with LG-R1 Dahe's control system, multi language choice, easy operation test; simple operation and debugging

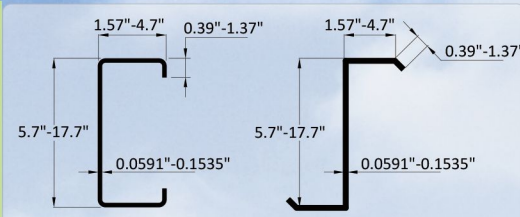


Adjustable CZ

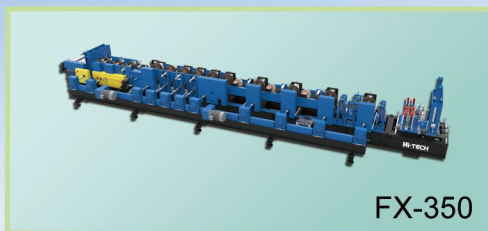
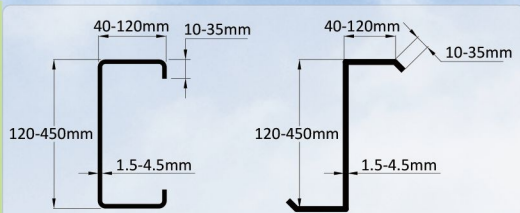
# F SERIES



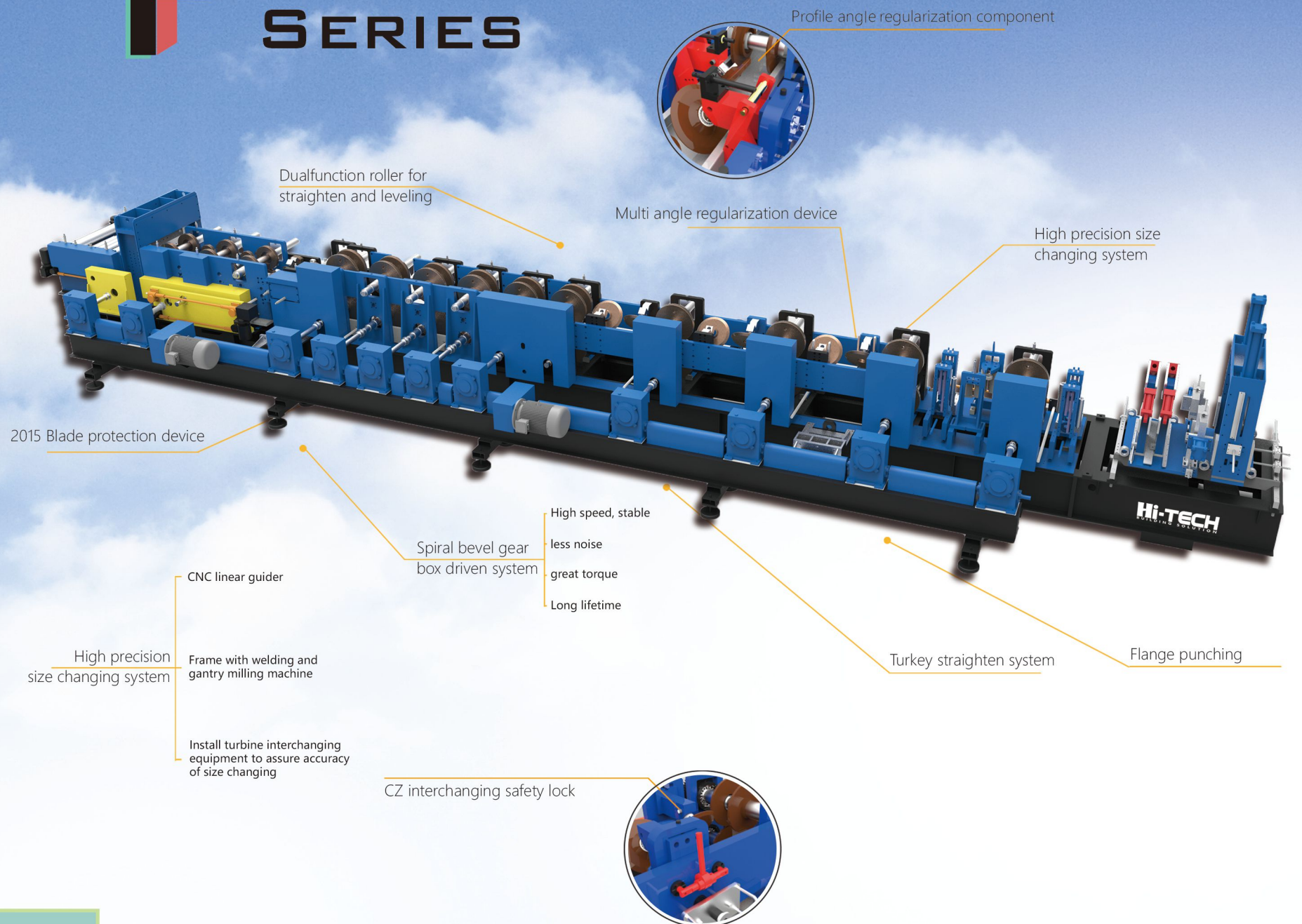
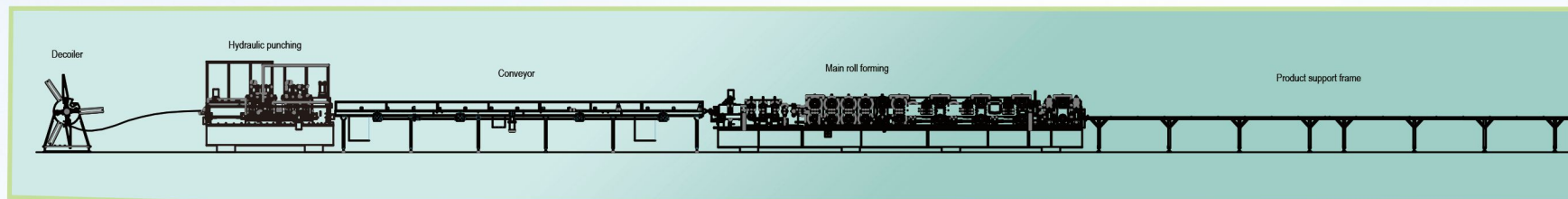
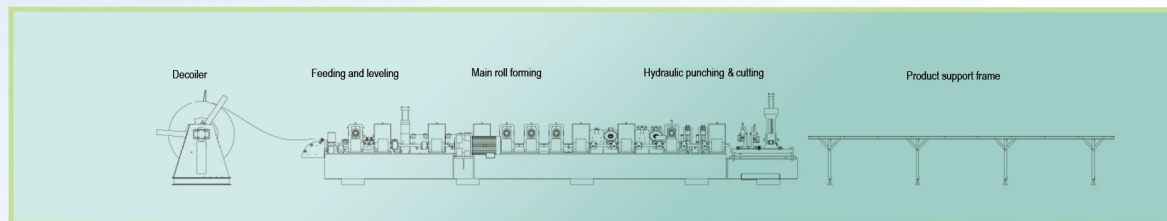
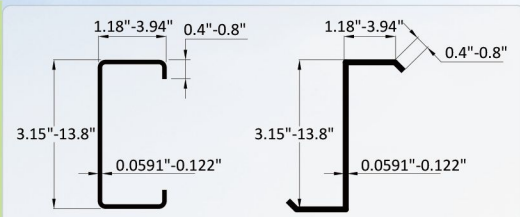
FX-450T



FX-450



FX-350



High speed and high stability  
Make your production more efficiency



Adjustable CZ

# N SERIES

Make your business  
become better and better

Extraordinary dual straighten system  
Easier straighten CZ shape

CZ interchanging safety lock

Quick positioning & guiding

Profile angel regularization component

High precision  
size changing system

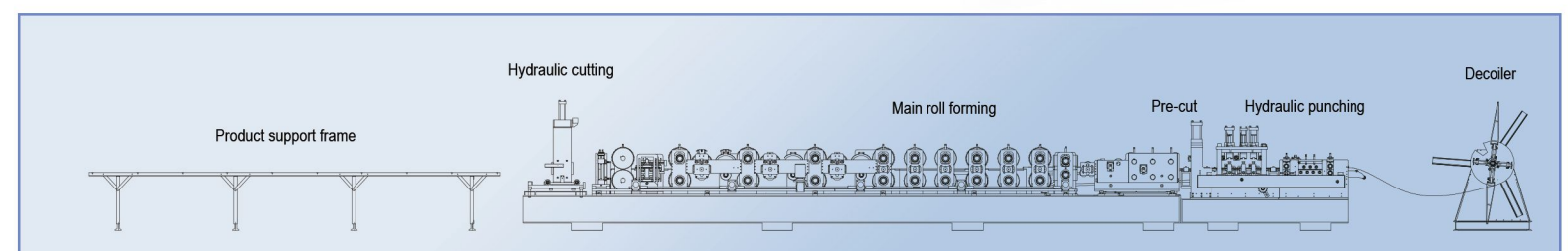
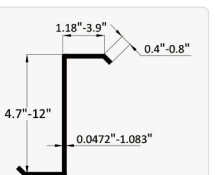
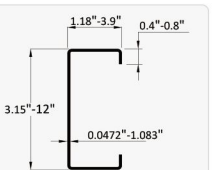
CNC linear guider

Rack processing by gantry  
milling machine

Install turbine interchanging  
equipment to assure accuracy  
of size changing

NL-300T

NL-300



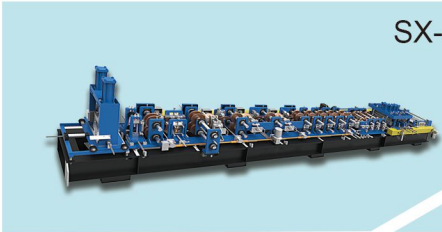
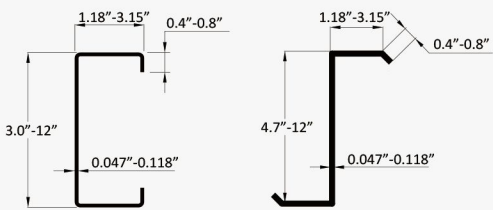


# Adjustable CZ

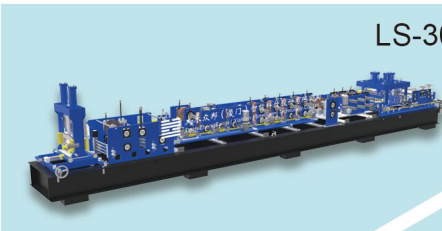
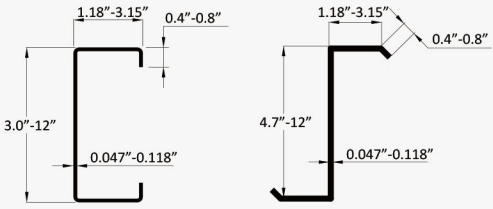
# S SERIES



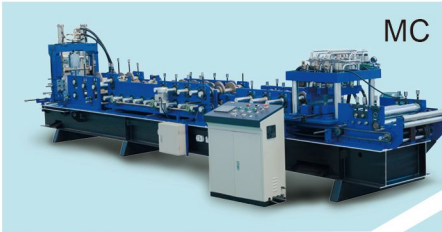
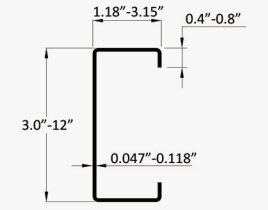
SX-20



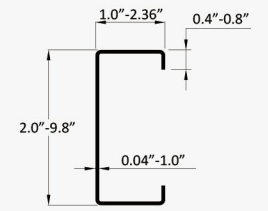
SX-10



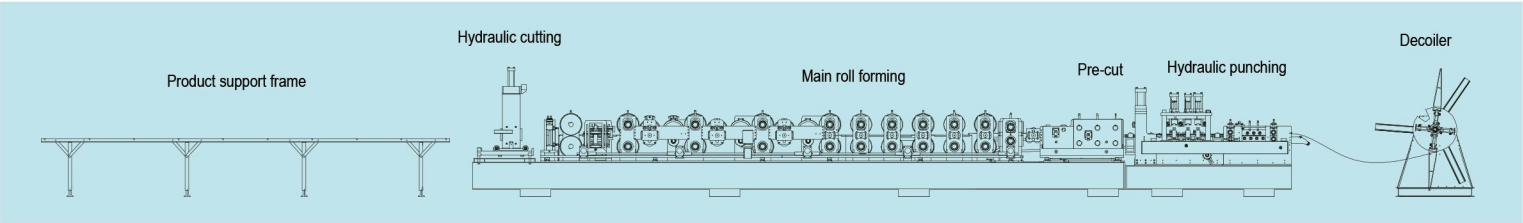
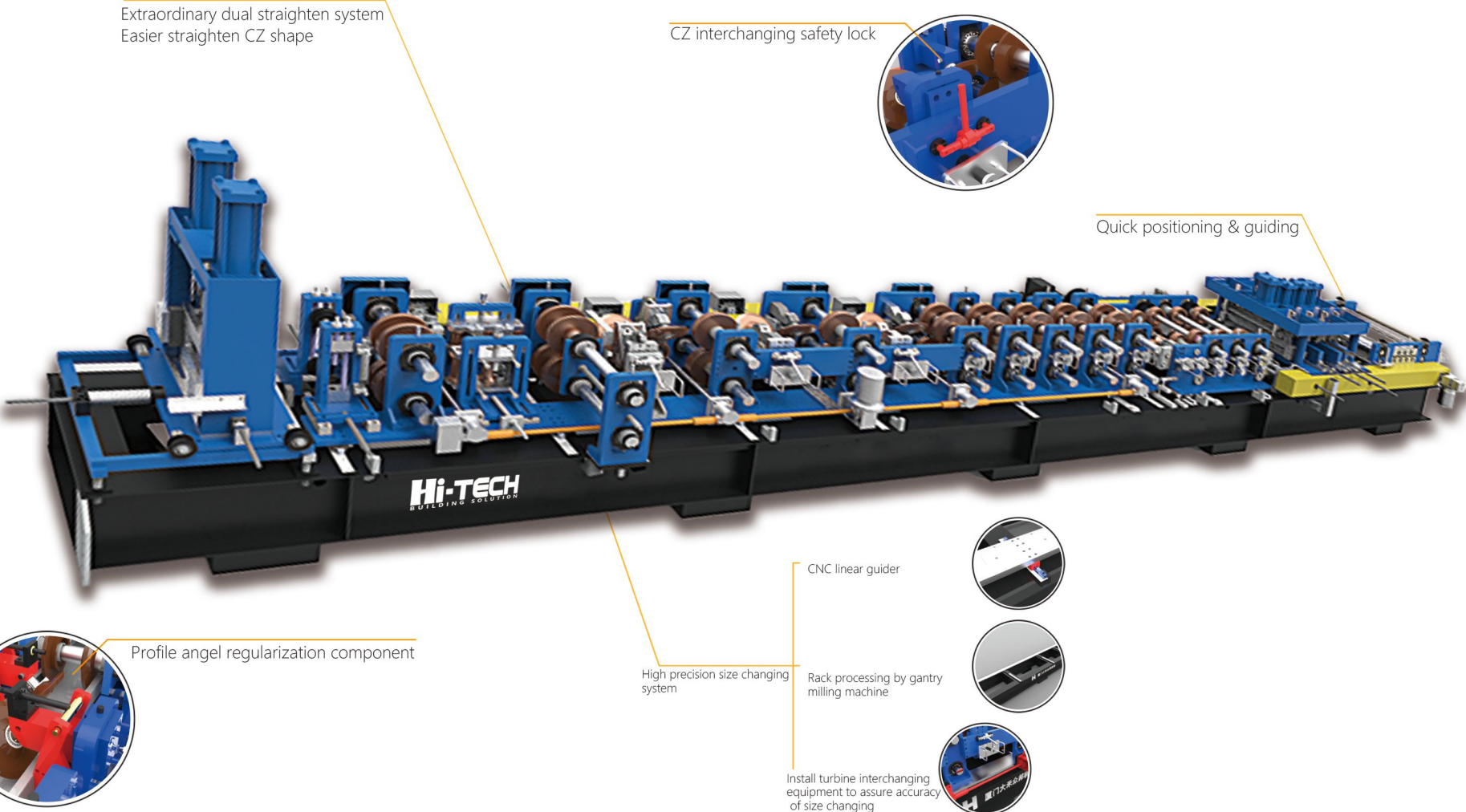
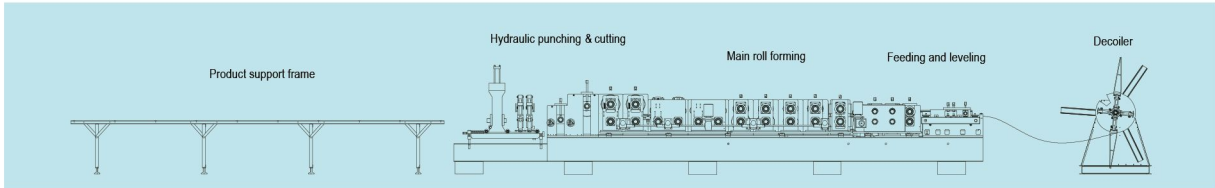
LS-300



MC



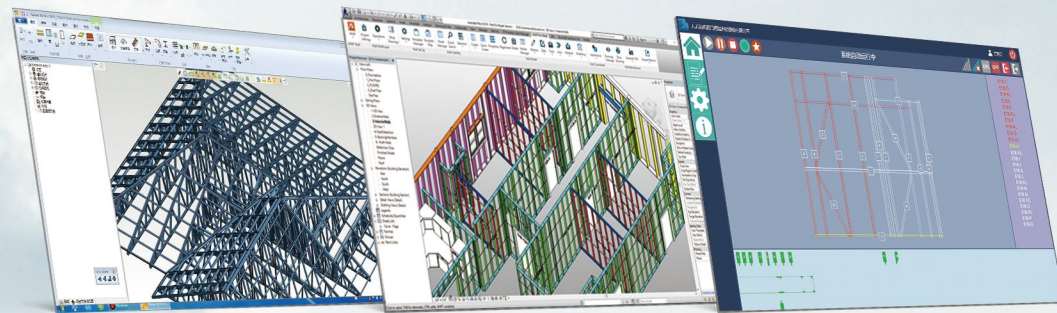
Producing Process Sketch





# WE OFFER PERFECT BUILDING SOLUTION

## 1 Design Software

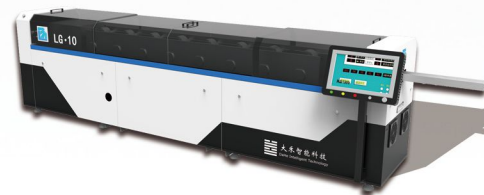


VT2017

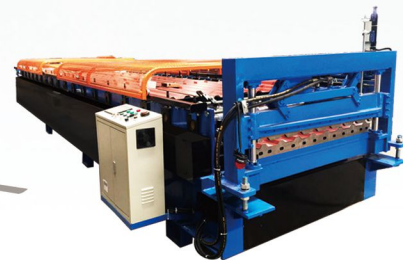
Building E

LG-R1

## 2 Intelligent Equipment



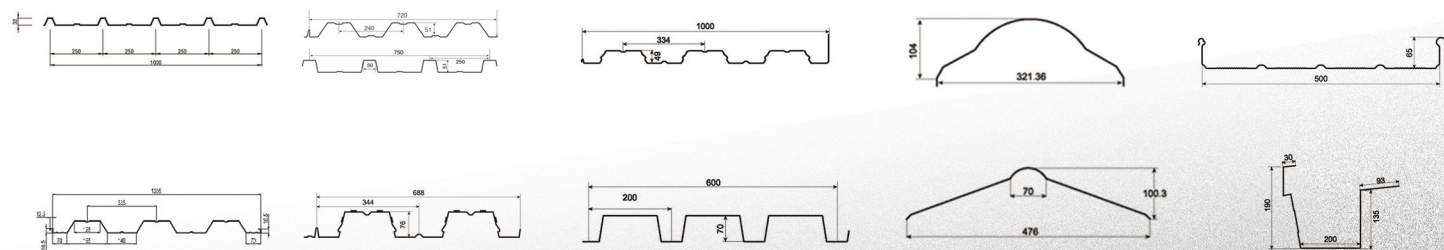
LG-10



Roof and wall roll forming machine



KB10-H00



## 3 Building Material



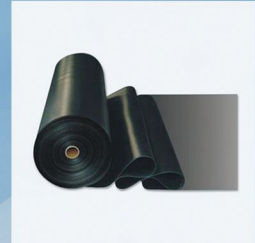
Synthetic resin roof tile



Connectors



OSB Board



waterproofing membrane



Fiberglass Insulation



ALC Board



PVC Wall Panels



fiberglass and asphalt roof shingles





Commanding lead, service is the only way.

Providing best-in-class services, a proved way leads to success.  
We can tailor our services to meet your needs.

